

# CLOUD BASED SOFTWARE

## TEMPERATURE MONITORING & ANALYSIS



### Data Management

Fridge & Freezer data is transmitted to the cloud

Intelligent algorithms determine operational anomalies

Alarms & asset performance data stored in the cloud



### Compliance

CFR Part 11 compliant to ensure data integrity

Create simple workflows for Quality & Risk Management

Store & manage calibration data for temperature accuracy



### Access control

Monitor fridge & freezer door opening and closing

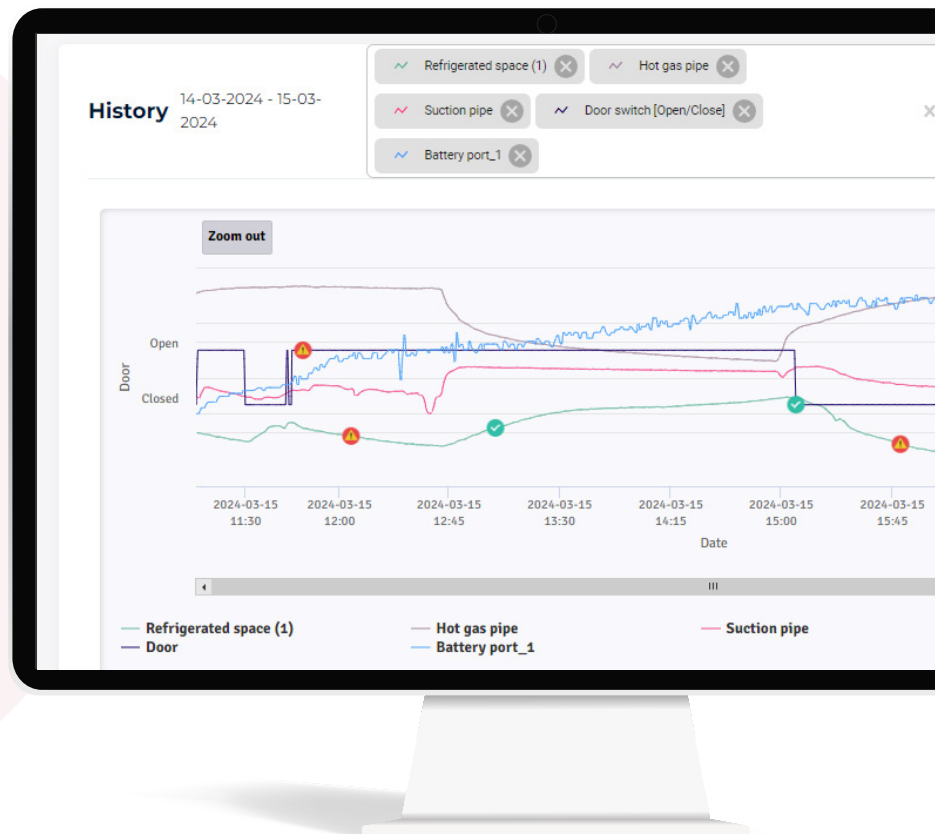
Control access to regulated environments

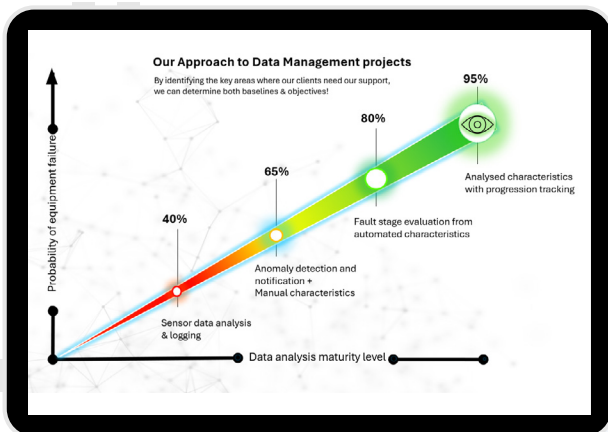
Manage data access for product security

## Predicting asset failure

By actively monitoring fridge & freezer performance against SOPs (Standard Operating Procedures)

[Book Software Demo](#)



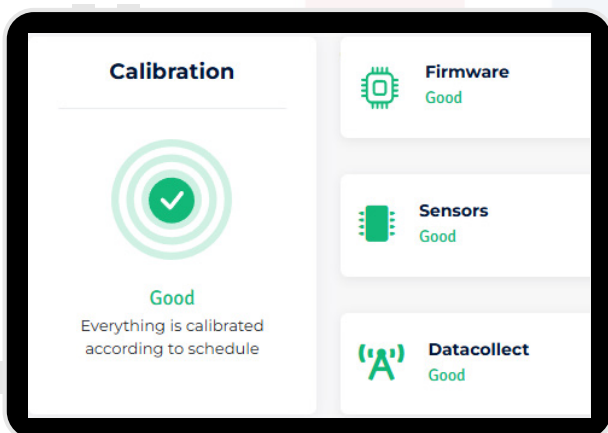


## Baselines and objectives

Defining baselines & objectives is the first part of our service offering intended to help our clients define sensor data criteria & alarm thresholds. By analysing individual data points of concern, it is possible to align data management objectives to create simple workflows and reports in a single platform.

## Active energy

Each device is connected directly to the built-in energy meter within the device. Record energy usage for each fridge or freezer to ensure complete visibility.



## Calibration data

The cloud platform allows Quality Managers to manage calibration data & accurately record temperature readings from the various data points. Responsible users can upload calibration certificates for traceability & define specific product data to fridges & freezers. Manage next calibration due dates and excursion reports.

# Description



## IQ & OQ

Installation and Operational qualification documents can be supplied for ICH Q10 qualification.

[Download IQ/OQ document](#)



## Calibration

Temperature sensitive data specific to sensor accuracy can be stored in the cloud software to remain compliant.



## Environmental monitoring

Store, measure and analyse data points against standard operating procedures to ensure product integrity.



## Access control/Door contacts

Control access points, door opening & compile reports about user access. Managing door contacts can save energy



## EU GMP Annex 11

Our system allows users to comply with guidelines for computerised systems that manage some manual operations. Considers risk management, personnel, supplier & service providers using the system.



## GxP Guidelines

Align with local and international regulatory guidelines for management of temperature sensitive data.